

Who we are



St GILES TRUST

Inspiring Choices, Creating Positive Futures



BEWARE OF
MOVING GATE

CAMP BRIXTON

no parking in
front of gates
24 hour access required

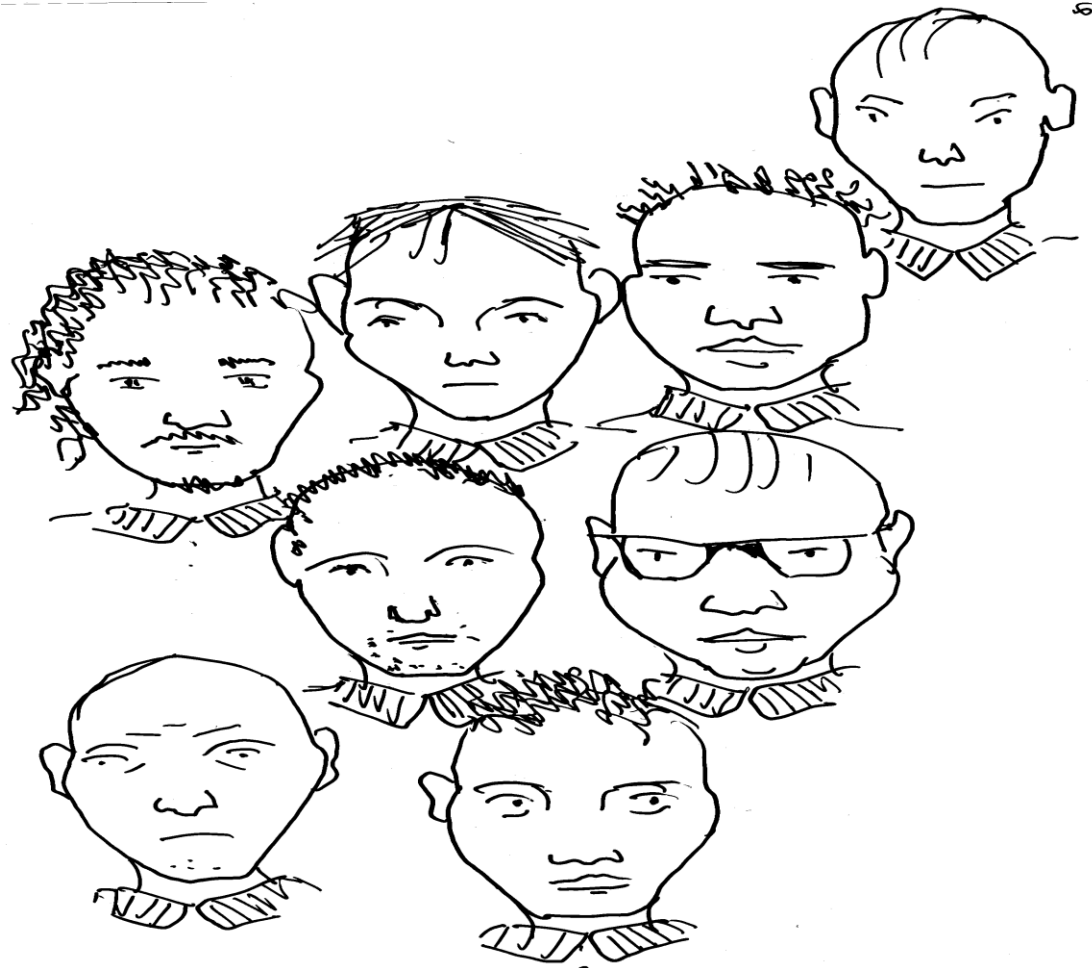
LE
The crown accepts no liability
for loss or damage to any vehicle or
contents or accessories.

The crown accepts no liability
for loss or damage to any vehicle or
contents or accessories.

NO PARKING
BEYOND
THIS POINT



The biggest underused resource in the prison



Why use Peers?

- Empathy & insider knowledge & experience
- Enabling & creating responsibility
- Promoting positive change through positive role modelling
- Engaging the hardest to reach clients
- Increasing Development & Employability – “The Multiplier Effect”.
- More Offenders Accessing More Services

Real Work & A Recognised Qualification



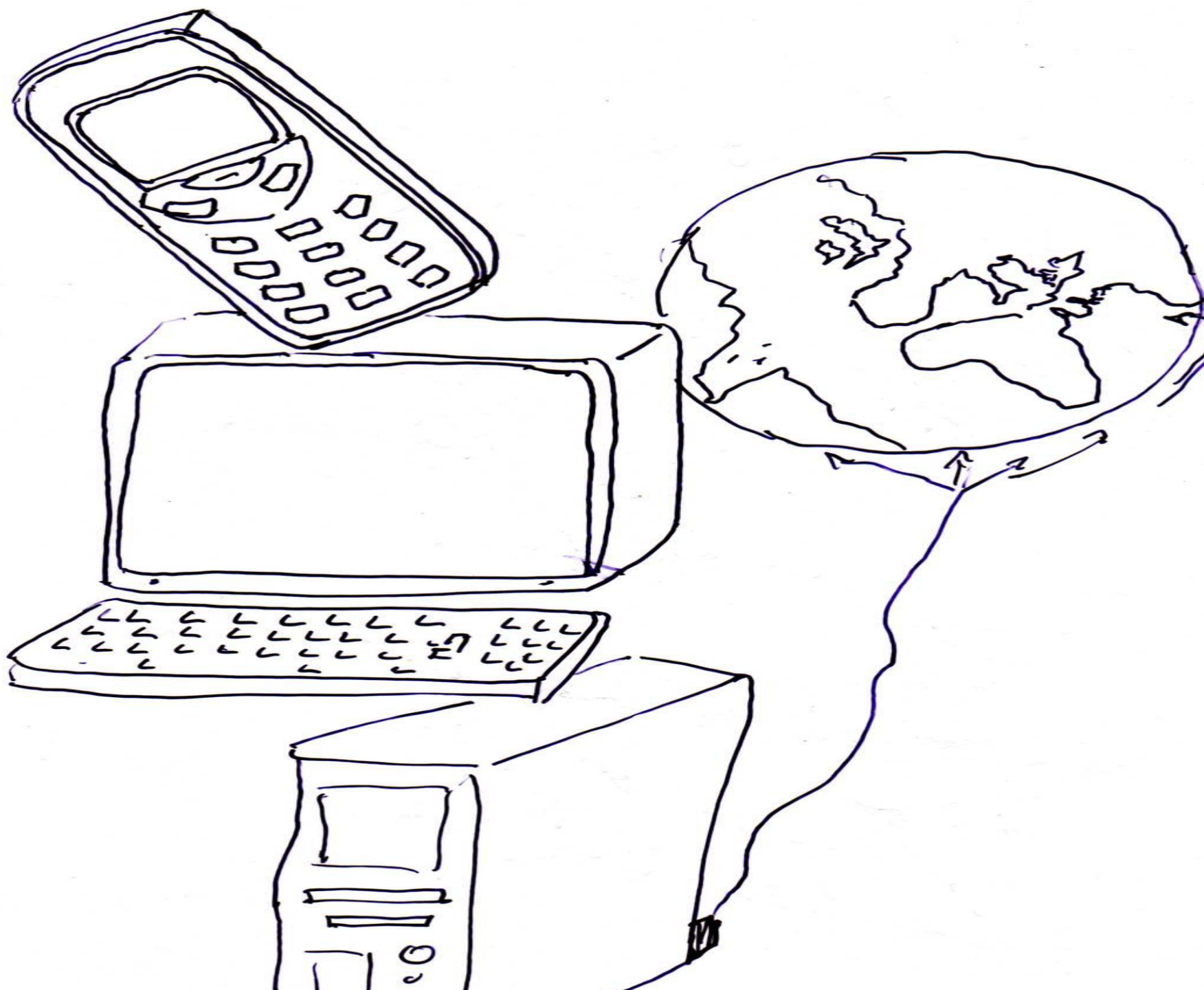
NVQ Level 3 in Advice & Guidance

- 12 Taught Sessions “Learning to Advise”
- 1:1 Ongoing Support & Assessment
- Real work providing evidence for NVQ portfolios for 4 – 6 months
- Established, proven monitoring and evaluation system systems
- Recognised accreditation – City & Guilds.
- Quality Framework provided by NVQ process.





HMP THE WEARE
HMP MAIDSTONE
HMP FORD
HMP LATCHMERE HOUSE





FROM PRISON.



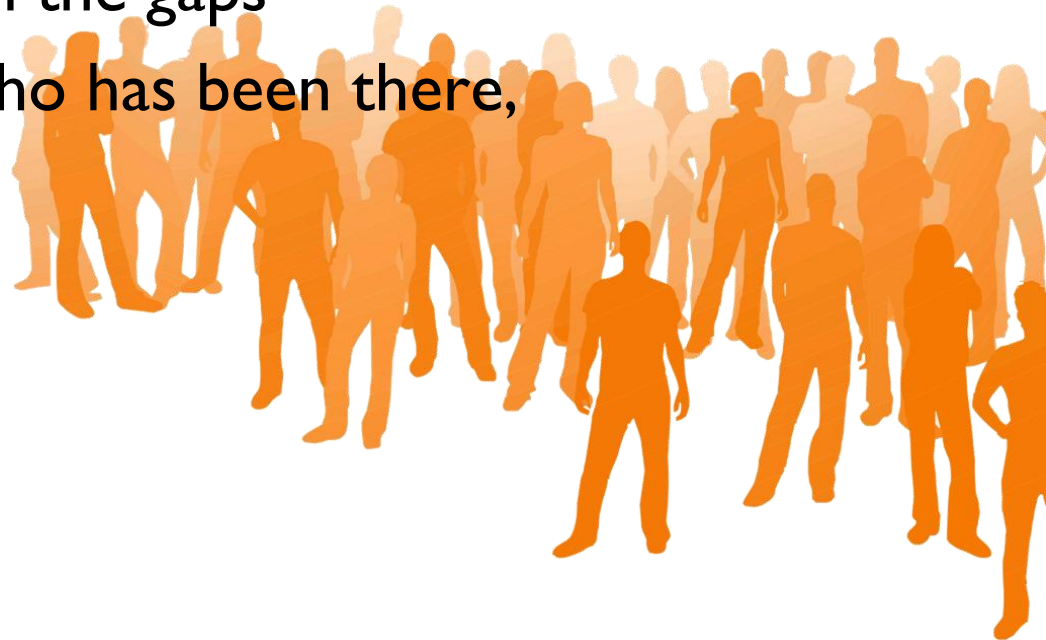
INTO THE COMMUNITY

A Peer Through the Gates Service



Why a PeerThrough the Gates Service?

- All the work, education etc. provided in prison can be lost on release
- Services are typically prison or community based
- Clients fall through the gaps
- An ex-offender, who has been there, understands.



Through The Gate – Typical tasks

- Pre-release housing assessment on the wing
- Meet at gates – avoid the pitfalls
- Find accommodation
- Get to pre arranged Benefits appointment
- Link with specialist support- Mental Health services, drug & alcohol agencies
- Refer to ETE support

Some Stats

Last year:

- 14,000 Client Needs Assessments
- 3,612 Positive Housing Interventions
- 2,407 Housing Finds
- 226 Jobs
- 2,000 completed training courses
- 745 into further training & jobsearch
- 315 NVQ Peer Graduates (55% from prison)
- 34% Staff are Ex-offenders
- 60% Peer Advisors had no prior educational qualifications

Information

Evaluations: ICPR, TTG, Frontier Economics -

http://www.stgilestrust.org.uk/CaseStudies/410375/evaluation_reports_on_st_giles_trust_services.html

Social Finance - <http://www.socialfinance.org.uk/>

St Giles Trust – www.stgilestrust.org.uk

Questions and Discussion

Contact details:

Maria McNicholl – Maria.Mcnicholl@stgilestrust.org.uk

